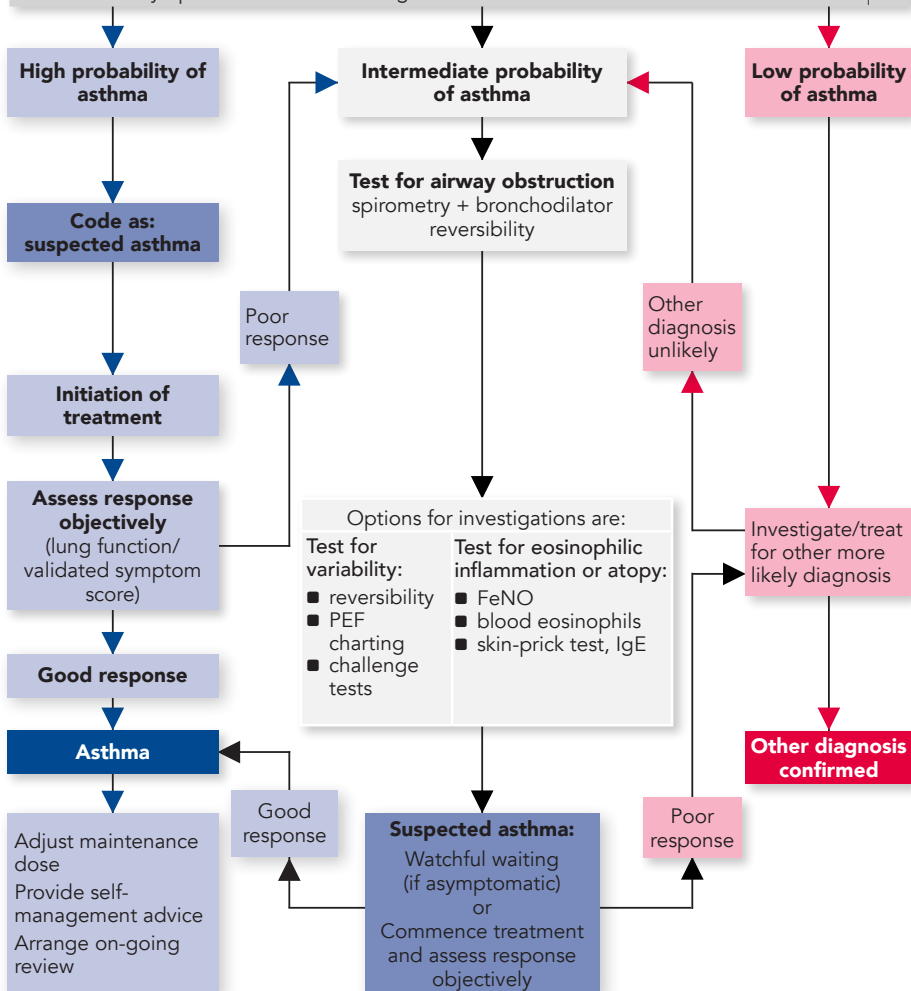


**Presentation with respiratory symptoms: wheeze, cough, breathlessness, chest tightness<sup>[A]</sup>**

Structured clinical assessment (from history and examination of previous medical records)

Look for:

- recurrent episodes of symptoms
- symptom variability
- absence of symptoms of alternative diagnosis
- recorded observation of wheeze
- personal history of atopy
- historical record of variable PEF or FEV<sub>1</sub>



PEF=peak expiratory flow; FEV<sub>1</sub>=forced expiratory volume in one second; FeNO=fractional exhaled nitric oxide concentration; IgE=immunoglobulin E

[A] In children under 5 years and others unable to undertake spirometry in whom there is a high or intermediate probability of asthma, the options are monitored initiation of treatment or watchful waiting according to the assessed probability of asthma.